



**Flexshade®**

Made under licence from Tension Span Structures Pty Ltd  
BY

**SHADE'N'SAILS**

# PERMANENT UMBRELLAS

BROUGHT TO YOU BY **SHADE'N'SAILS**

# FLEXSHADE® UMBRELLAS

MODULAR UMBRELLA & MEMBRANE STRUCTURES

Architecturally striking and long lasting, Flexshade® Waterproof Umbrellas provide the best all weather protection.

Wind rated to 160 km/h and guaranteed for ten years, each Umbrella comes with a wide variety of frame and fabric options, and a long list of heating and lighting extras.

The flexible PVC fabric allows natural light translucence, and square-frame members (on some models) allow the attachment of side curtain blinds for totally protected areas.



**CONTACT YOUR LOCAL AGENT**

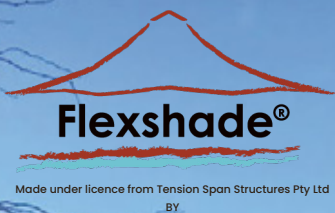


- LONG LASTING FABRIC
- DURABLE STEEL FRAME

- 10 YEAR STRUCTURAL WARRANTY
- ENGINEERED TO AUSTRALIAN STANDARDS

- 3D COMPUTER DESIGNED
- RANGE OF COLOURS





SHADE'N'SAILS

# PERFECT FOR RESIDENTIAL & COMMERCIAL APPLICATIONS

## ARCHITECTURALLY DIVERSE RANGE OF PRODUCTS

### QUARTET

SINGLE SQUARE CANOPY WITH A CENTRE POST



### HEXAGONAL

SINGLE HEXAGONAL CANOPY WITH A CENTRE POST



### SIDE POST

CANTILEVER UMBRELLA WITH A SINGLE SIDE POST (SQUARE OR HEXAGONAL)



### BEAM EDGE

SQUARE EDGE FRAME FOR MOUNTING BLINDS AND OTHER STRUCTURES (CENTRE POST OR SIDE POST)



### DUET

TWIN CANOPIES CANTILEVERED OFF A SINGLE SIDE POST



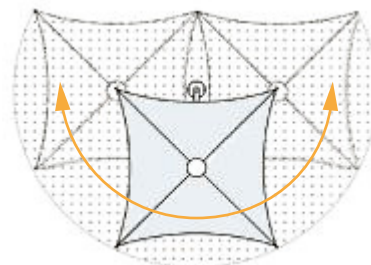
### LINKS

JOIN MULTIPLE CANOPIES TOGETHER



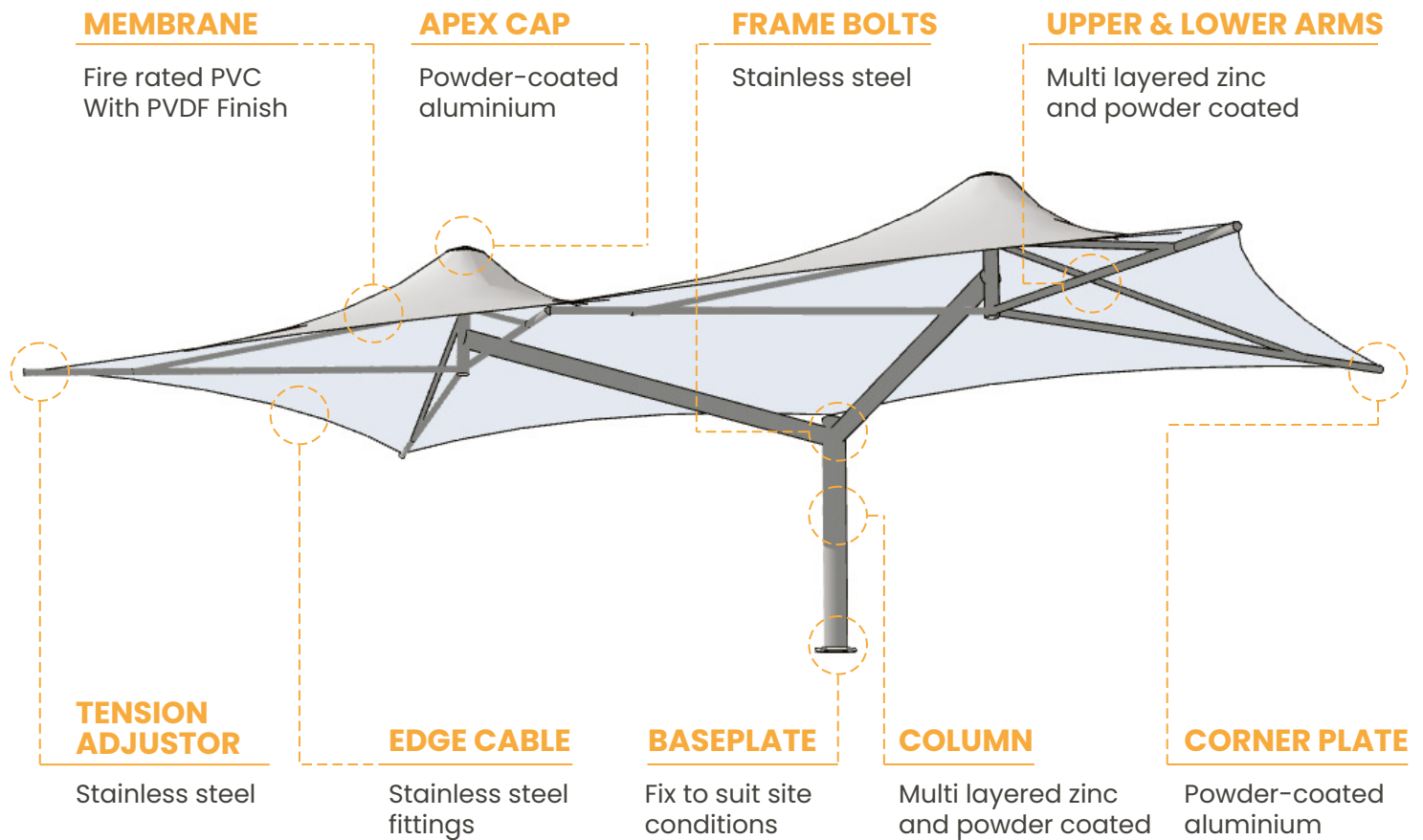
### PIVOT

ROTATE OR SWIVEL CANOPY TO INCREASE SHADE AREA BY OVER 250%



# FLEXSHADE-SET AND FORGET WEATHER PROTECTION

The gold standard in outdoor weather protection, Flexshade® outdoor umbrellas create fantastic sun and rain protection unlike any other umbrella and are engineered to survive extreme conditions.



**WIND SPEED RATED TO 160 KM/HR DESIGNED  
TO AS1170 AUSTRALIAN STANDARDS**

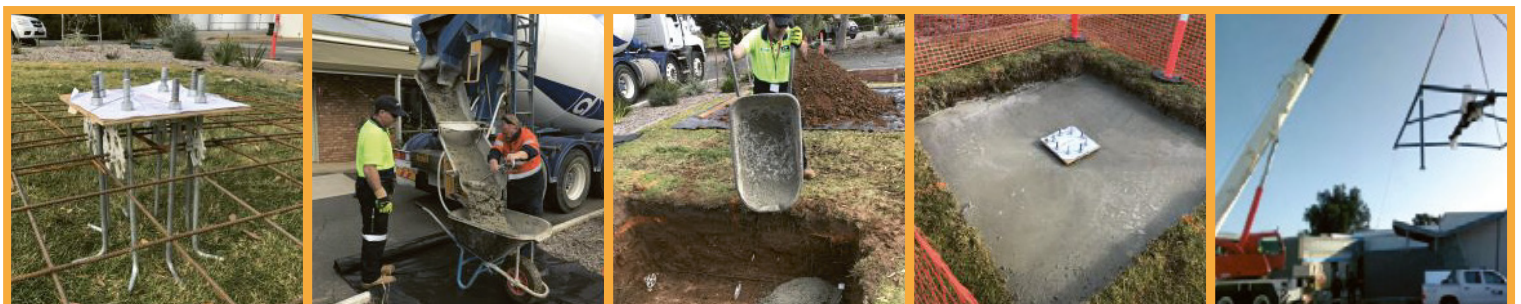
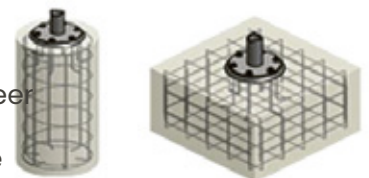
## HEATING AND LIGHTING OPTIONS

Give your outdoor area that extra bit of warmth with the addition of a Heatstrip® outdoor heater. These efficient heaters are easily attached to Flexshade® umbrellas. Another fantastic option is to include additional Gain that alfresco dining feel and enjoy your outdoor areas at night, with a stylish stainless-steel light fixture.



## ENGINEERED FOOTINGS & HOLD DOWN BOLTS

Flexshade® is secured using a large concrete pad or pier footing. The high MPa concrete is reinforced by a steel rio-bar cage. Wind loadings are calculated and each umbrella is designed to Australian Standards. The Frame is securely fixed using chemical anchor and hold down bolts, which are set into the concrete footing.





## TOUGH FABRIC OPTIONS

Waterproof PVC is the chosen canopy material for all Flexshade® Umbrellas. The PVDF coated PVC is high tear strength, and is resistant to fading. This makes each Flexshade® an extremely long lasting canopy, with 100% rain and sun protection. Translucent and block out options are both available.



**AROUND THE HOME**

## WIDE RANGE OF FRAME COLOURS

Steel is lightly sandblasted, zinc primed and then powder coated to your chosen Colorbond colours. This gives you the ultimate flexibility in design, simply choose your desired colour to match the surrounds of your project.



**POOL SHADING**

## SPECIFICATIONS

**SUN RESISTANCE :** 100% UV BLOCK OUT

**RAIN RESISTANCE :** 100% WATER RESISTANCE—IMPERMEABLE

**QUARTER :** 2.5M SQUARE UP TO 8M SQUARE HEXAGONAL: 3.6M

**DIAGONAL UP TO 5.8M** DIAGONAL

**CANOPY HEIGHT :** TYPICAL HEAD CLEARANCE IS 2.1M TO 2.4M

**WIND RATING :** 160 KM/HR WITH ENGINEERED FOOTINGS

**WIND LOAD :** 1 kN AT CORNER

**SNOW LOAD :** 0.95 kPa OVER GROUND



**CARPARK SHADING**

## STRUCTURAL WARRANTY

Framework, fixings & fittings all come with 10 year manufacturers warranty.



## FABRIC WARRANTY

PVC fabric is made to last with 10 year warranty against fading and degradation.



**PUBS, CLUBS, HOTELS**



**SCHOOLS & CHILDCARE**



Made under licence from Tension Span Structures Pty Ltd

BY



ENJOY THE SPACE YOU'RE IN

[aalta.com.au](http://aalta.com.au)